

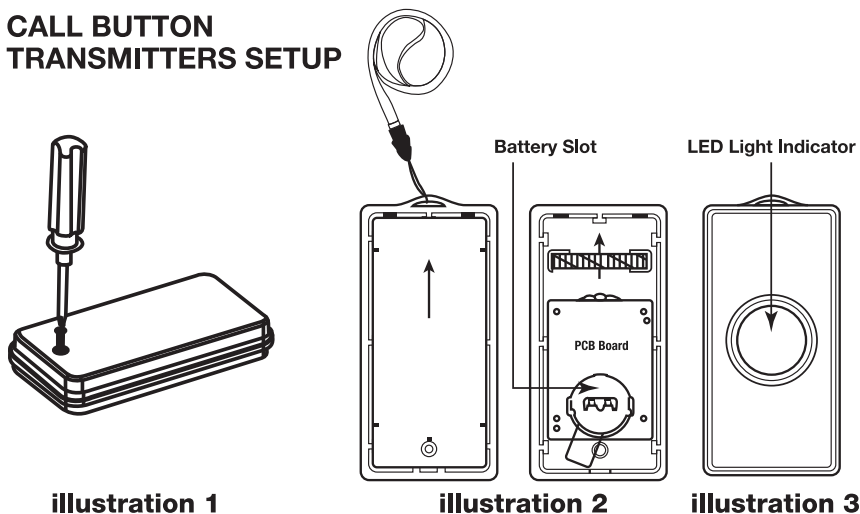
CALL BUTTON PAGER ALARM SYSTEM

Receiver Model # SWCB-2S • Transmitter Model # WCBT-1 • Made in PRC

PRODUCT FEATURES

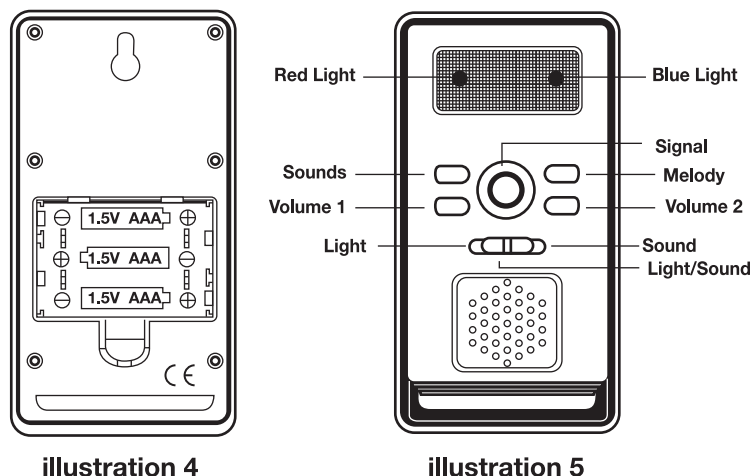
- Wireless operating distance of 500+ feet in an open area. Walls and other objects may interfere with signal transmission and decrease operating distance. Always test desired operating distance before using.
- Caregiver receiver can be paired with up to eight RED call button transmitters and eight BLUE call button transmitters. Additional call button transmitters must be purchased separately.
- Operates on 433 MHz radio frequency band
- Caregiver receiver emits clear sound with 45 alarm/melody sounds and selectable volume control.
- Blue button transmitter activates choice of 36 melody sounds, while the red button transmitter activates 9 emergency sounds.
- Receiver features three signal options, including bright LED light signal for users with limited hearing:
 - a) Alarm only
 - b) Light only
 - c) Alarm and light
- Call button transmitters are water resistant, and feature LED light indicator on button to confirm activation. Lanyard cord allows the call buttons to be worn around the patient's neck
- LED lights on caregiver receiver and patient transmitters will flash when the battery is low.

CALL BUTTON TRANSMITTERS SETUP



1. Use included screwdriver to open the back side of each call button transmitter case (refer to illustration 1).
2. Insert one CR2032 battery (not included) into the battery slot. The positive side of battery should be facing up. Test transmitter by pressing the call button. The LED call button light indicator should illuminate when the call button is pressed.
3. Test both transmitters by pressing the blue and red "Alarm" call buttons to confirm that the "LED Light Indicator" illuminates when the call buttons are pressed (refer to illustration 3).

CAREGIVER RECIEVER SETUP, PAIRING & OPERATION



1. **BATTERY INSTALLATION**
 - a) Remove battery cover and install 3x AAA batteries (not included). Refer to illustration 4 for correct battery polarity position (+/-).
 - b) Press **SOUNDS** or **MELODY** button located on the receiver to confirm batteries are functioning. Each time **SOUNDS** or **MELODY** button is pressed a different alarm sound or melody is audible. Replace the battery cover.
2. **PAIR THE CAREGIVER RECIEVER & TRANSMITTER**
 - a) Press and hold **SIGNAL** button for six seconds (refer to illustration 5) until both red and blue LED lights illuminate indicating that the receiver is in pairing mode. The receiver will remain in pairing mode for two minutes or until each call button is pressed.
 - b) Press the red call button once and the blue call button once to pair with receiver. The LED lights will flash to indicate successful pairing. LED lights will automatically stop flashing after 5-10 seconds.

- c) After LED lights stop flashing, test system functionality by pressing the each of the call buttons and listening for alarm/melody sound and/or flashing LED indicator light.

3. SOUND & LIGHT OPTIONS

- The receiver or pager has three signal options. Please refer to the drawing above.
 - a) **SOUND ONLY** - Alarm/melody will always continuously sound until batteries are dead, or press any of these buttons (**SOUNDS, VOLUME 1, MELODY, VOLUME 2 or SIGNAL**) to silence music or alarm sound.
 - b) **LIGHT ONLY** - LED light will always continuously flash until batteries are dead, or press any of these buttons (**SOUNDS, VOLUME 1, MELODY, VOLUME 2 or SIGNAL**) to turn off LED light.
 - c) **LIGHT/SOUND** - Alarm/melody and LED light will always continuously sound or flash until batteries are dead, or press any of these buttons (**SOUNDS, VOLUME 1, MELODY, VOLUME 2 or SIGNAL**) to silence alarm or melody sound and turn off LED light.

4. CHOOSING DESIRED MELODY OR ALARM SOUND

- a) Press **MELODY** button to cycle through the 36 selectable melody sounds that are activated when the blue call button is pressed. During this process press **SIGNAL** button to silence the music sound, but the current music sound and volume are identified.
- b) Press the **SOUNDS** button to cycle through the 9 selectable alarm sounds that are activated when the red call button is pressed. During this process press **SIGNAL** button to silence the alarm sound, but the current alarm sound and volume are identified.
- c) Stop pressing **MELODY** and **SOUNDS** buttons once preferred melody or alarm sound is heard.

5. VOLUME LEVEL ADJUSTMENT

- Press **VOLUME 1** button to adjust the volume of the alarm sounds that are activated via the red button transmitter. Press button until the desired volume setting is heard.
- Press **VOLUME 2** button to adjust the volume of the melody sounds that are activated via the blue button transmitter. Press until the desired volume setting is heard.

6. CANCELLING ALARM or MELODY SOUND

- Press **SOUNDS, MELODY, VOLUME 1, VOLUME 2 or SIGNAL** buttons to silence alarm or melody sound after call button has been pressed by patient.

7. INTERFERENCE

- If call button system is causing interference with nearby electrical equipment, please press **MELODY** and **VOLUME 2** buttons at the same time and hold them for six seconds, the receiver makes a Beep-Beep sound and the 2 LED lights on receiver will flash 3 times after successfully clearing the ID code, then press the **SIGNAL** button for six seconds to get the new ID code by following the instructions under the **PAIR THE CAREGIVER RECEIVER & TRANSMITTER** on page 1.

LOW BATTERY INDICATION

- Caregiver Receiver Batteries (3x AAA) – Receiver LED indicators will flash when batteries are low. Replace batteries accordingly.

- Call Button Transmitter Batteries (1x CR2032 in each transmitter) – Transmitter LED lights will flash when battery is low. Replace batteries accordingly.

NOTES AND WARNINGS

- Always use high quality alkaline batteries for maximum operational life.
- Use only designated battery type. Do not use rechargeable batteries. Do not mix battery types.
- Remove batteries from product when it will not be used for an extended period of time to avoid leakage.
- Keep caregiver receiver away from humidity, rain, intense sunlight, and metal objects.
- Do not attempt to disassemble any product components. There are no user serviceable parts in this device.
- Do not immerse electronically operated products in water or liquid.
- Wipe clean only.

TROUBLESHOOTING

- Check to make sure both the caregiver receiver and call button transmitter batteries are functional.
 - a) Press **SOUNDS** or **MELODY** button to cycle through the caregiver receiver alarm/melody sounds to confirm that the sounds are audible.
 - b) Press call button transmitter “Alarm” buttons to confirm that the LED button lights illuminate.
- Check call button transmitter battery compartment to confirm battery is correctly installed.
- If the caregiver receiver and patient call buttons are no longer wirelessly communicating, simply re-pair the components using the following instructions:
 - a) Press and hold **SIGNAL** button (refer to illustration 5) until LED indicators illuminate indicating that the receiver is in pairing mode. The receiver will remain in pairing mode for two minutes or until the call button is pressed.
 - b) Press each call button once to pair with receiver. The corresponding LED light will flash to indicate successful pairing. LED lights will automatically stop flashing after 5-10 seconds.
 - c) After LED lights stop flashing, test system functionality by pressing the call buttons one at a time and listening for alarm/melody sound and/or flashing LED indicator light.

WARRANTY: Personal Safety Corporation warrants this product to be free from factory defects in materials and workmanship for a period of one year from the date of purchase. Warranty is void if this product is misused, abused or damaged. No warranty or responsibility of use expressed or implied.

CAUTION!

This product is not a restraint. It will not prevent a person from getting out of their bed or chair. The product is designed for a user to alert a caregiver that they require assistance of some kind.



Please see our complete line of Secure® fall/wandering prevention & patient safety products at www.SecureSafetySolutions.com

Highest Quality...Lowest Prices...Guaranteed!

Personal Safety Corporation • Hiawatha, Iowa 52233 • 800.373.2873