

# WIRELESS SENSOR PAD TRANSMITTER

Model #: CAS-SPT • Made in PRC

## PARTS AND FUNCTION

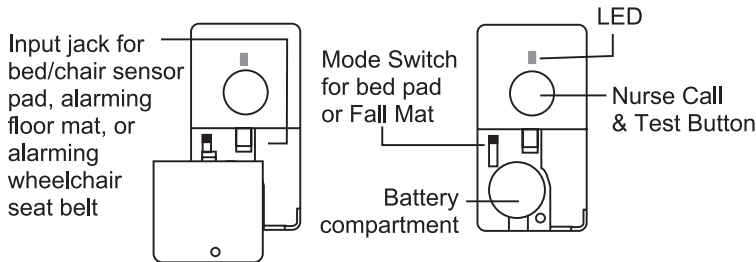


Figure 1

Figure 2

## BATTERY INSTALLATION

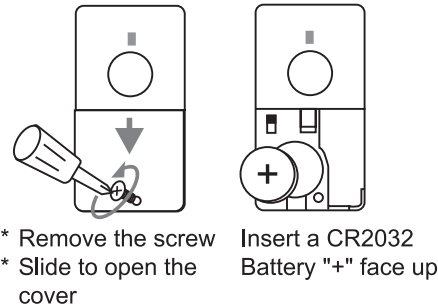


Figure 3

Figure 4

## CODE PAIRING & MELODY SELECTION

The CAS-SPT sensor pad transmitter must be paired with the CAS-PGR Wireless Caregiver Pager and/or CAS-WCR Wireless Caregiver Receiver before using. Always test the system before each use.

Step 1: Insert batteries into the CAS-SPT sensor pad transmitter.

Step 2: Insert batteries into the CAS-PGR wireless pager (Figure 5) and/or CAS-WCR wireless receiver (Figure 6).

Step 3: Enter pager and/or receiver pairing mode by pressing and holding the zone select button ● for a few seconds until zone light "I" begins to flash.

Step 4: Press the zone select button ● again to switch to the zone you wish to pair with. Press melody selector 🎵 to scroll through the melodies. Once you hear your preferred melody, do not press again as it is now selected.

Step 5: Once the zone and melody are selected, with the zone icon flashing, trigger the transmitter by pressing the test button once to pair. If successful, the pager and receiver will generate a short tone to indicate a successful pairing. Press the ● button to switch to another zone to pair up to four patient monitoring system components, or press the Reset button located on front of CAS-PGR pager and the back of the CAS-WCR receiver to exit pairing mode.

*(Available monitoring components that pair with the CAS-PGR pager and CAS-WCR receiver include CAS-PIR motion detector, CAS-FAM fall alarm monitor, CAS-TPC pull cord alert, CAS-DWA door/window alarm)*

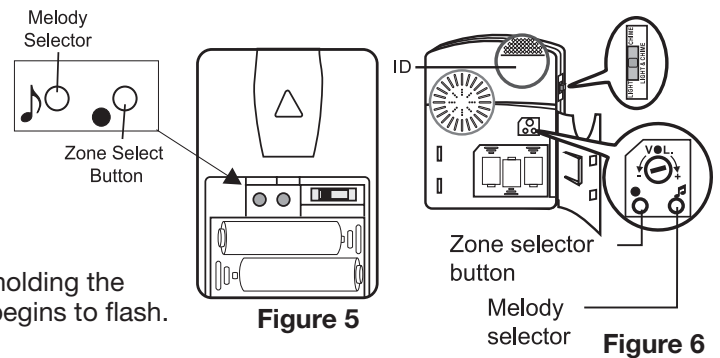


Figure 5

Figure 6

## Setting Transmitter for bed/chair sensor or floor mat use

Open the battery cover and slide the switch to Mat or Pad position

- Mat (normally open): For alarming floor mat use (Model No. MAT-1 or MAT-2)
- Pad (normally closed): For bed or chair sensor pad use
- +3S: For bed or chair sensor pad use with **THREE SECOND DELAY** (ideal for patients that tend to move a lot in bed or when sitting in a chair).
- +10min: For bed or chair sensor pad use with **TEN MINUTE DELAY** (ideal for patients who are able to go to bathroom, etc. on their own. If the patient does not return to the bed or chair sensor pad within 10 minutes, the caregiver pager and/or receiver will be alerted).

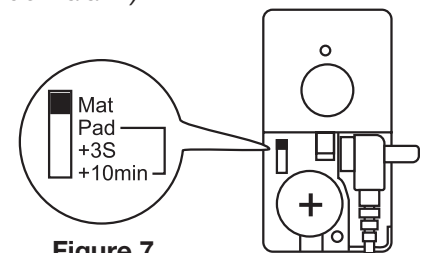


Figure 7

## Code Conflict

If the universal transmitter coding is the same as another transmitter you must change the code. When you have changed the code re-pair the universal transmitter (Figure 8).

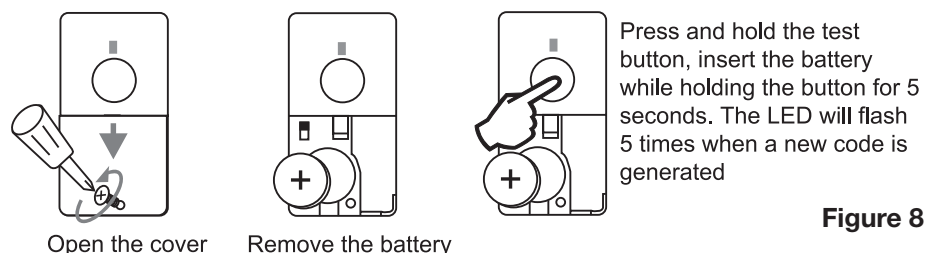


Figure 8

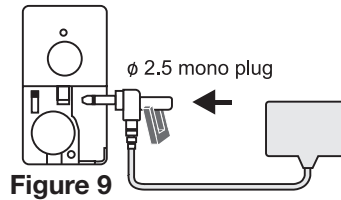
# WIRELESS SENSOR PAD TRANSMITTER

*Continued*

## OPERATION

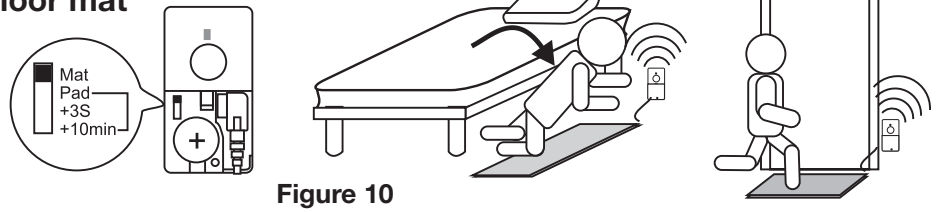
### Connection

1. Open the battery cover
2. Connect the sensor pad to the transmitter
3. Close the battery cover



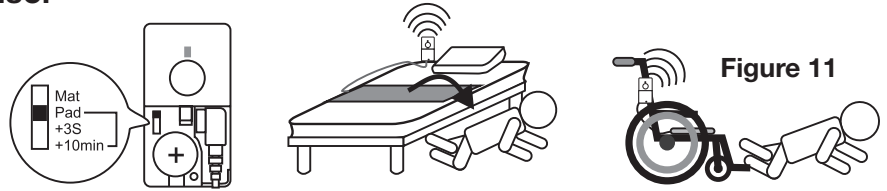
### Mat – For use with Secure<sup>®</sup> alarming floor mat sensors (Model Nos. MAT-1, MAT-2)

The transmitter will send an alert signal to the caregiver pager(s) and/or receiver(s), when the patient steps or falls on the floor mat sensor (Figure 10).



### Pad – For use with Secure<sup>®</sup> bed/chair sensor pads (Model Nos. WBEDPAD-1, BEDPAD-1, BEDPAD-45, BEDPAD-14, WCHAIRPAD-1, CHAIRPAD-1, CHAIRPAD-45, CHAIRPAD-14)

When the patient leaves the sensor pad, the transmitter will send an alert signal to the paired caregiver pager(s) and/or receiver(s) (Figure 11).



### Pad Delay Mode

To prevent false alarms, slide the mode switch to Pad + 3S or 10min position. Alarm will not sound for three seconds or ten minutes, depending on the selection. When the bed/chair or floor mat sensor is triggered, the timer will start. When 3 min or 10 min have passed, the transmitter will send an alert signal to the caregiver pager(s) and/or receiver(s). Pressing the Call/Test button once will cancel the alarm delay timer.

**Pad + 3S** – Excellent setting to prevent false alarms that are due to patients moving around in bed or when sitting in a chair. This setting will not work with floor mat sensor.

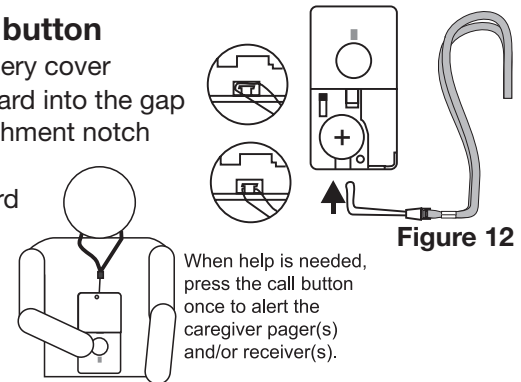
**Pad + 10min** - May be a suitable setting for patients who are able make it to the toilet and back, but not allowed to wander elsewhere. Use this setting with caution, and only after performing a thorough patient risk assessment. This setting will not work with floor mat sensor.

### ONE YEAR LIMITED WARRANTY

Personal Safety Corporation warrants this product to be free from factory defects and workmanship for a period of one year from date of purchase. Warranty is void if this product is misused, abused or damaged. No warranty or responsibility of use expressed or implied.

### Using as a call button

1. Open the battery cover
2. Push the lanyard into the gap over the attachment notch (Figure 12)
3. Pull the lanyard to attach
4. Close the battery cover



When help is needed, press the call button once to alert the caregiver pager(s) and/or receiver(s).

**FCC STATEMENT:** THIS EQUIPMENT HAS BEEN TESTED AND FOUND TO COMPLY WITH THE LIMITS FOR A CLASS B DIGITAL DEVICE, PURSUANT TO PART 15 OF THE FCC RULES. THESE LIMITS ARE DESIGNED TO PROVIDE REASONABLE PROTECTION AGAINST HARMFUL INTERFERENCE IN A RESIDENTIAL INSTALLATION. THIS EQUIPMENT GENERATES, USES AND CAN RADIATE RADIO FREQUENCY ENERGY AND, IF NOT INSTALLED AND USED IN ACCORDANCE WITH THE INSTRUCTIONS, MAY CAUSE HARMFUL INTERFERENCE TO RADIO COMMUNICATIONS.

However, there is no guarantee that interference will not occur in a particular installation. If this equipment does cause harmful interference to radio or television reception, which can be determined by turning the equipment off and on, the user is encouraged to try to correct the interference by one or more of the following measures:

- Reorient or relocate the receiving antenna.
- Increase the separation between the equipment and receiver.
- Connect the equipment to an outlet on a circuit different from that to which the receiver is connected.

This device complies with part 15 of the FCC rules. Operation is subject to the following two conditions: (1) This device may not cause harmful interference, and (2) this device must accept any interference received, including interference that may cause undesired operation.

**Note:** Modifications to this product will void the user's authority to operate this equipment.



Please see our complete line of Secure<sup>®</sup> fall/wandering prevention & patient safety products at [www.SecureSafetySolutions.com](http://www.SecureSafetySolutions.com)

**Highest Quality...Lowest Prices...Guaranteed!**

**Personal Safety Corporation • Hiawatha, Iowa 52233 • 800.373.2873**